

OPS SQL / Remote Data Collection

OPS can meet your challenge for improving efficiency and accuracy of gathering field data, with OPS SQL REMOTE AND POCKET OPS

OPS SQL Remote has the same look and feel of the OPS SQL client, but this module allows remote users to **collect data on any disconnected PC or Tablet PC** running windows and then sync the data to the OPS SQL database later. The Data Entry Forms and LabCal Samples work just like they do in OPS SQL.

OPS SQL Remote

- Tablet PC
- Laptop PC
- Data entry
- 1 yr history

The Power of Information

Bring all your SCADA, Laboratory and operator log data together and transform it into information.

The entry toolbox is available to assist with entry

1. Initial Upload: sends historical data, variable info, base tables, and data entry forms to the remote device.

2. You are now ready to enter data. All forms are available to the user and security is applied just as if the user was in OPS SQL. The only difference is that the user is not connected to the database and data is stored locally until it is synchronized.

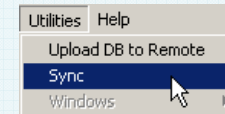
3. When you are ready, simply connect to OPS SQL server and sync the data:

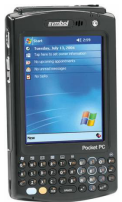
Pocket OPS

- Data entry
- Recent history
- Time stamp
- Detail calcs
- Routes
- Sampling
- Bar coding
- Windows Mobile PDA

The Sync command connects to the OPS SQL database and:

- Updates OPS SQL Remote Client from OPS SQL Database to the latest available version
- Sends data changes from the Remote device to the OPS SQL database since last sync
- Sends all data changes from OPS SQL to the Remote device since last sync
- Sends all changes to the base tables (i.e. changes to limits...) to the Remote device
- Sends all forms from OPS SQL to the Remote device that have changed since





Pocket OPS allows you to use your PDA to collect data in the field. You may select from a wide variety of devices with the MS Windows Mobile operating system including retail, industrial with or without bar coding capabilities.



060612-0012

Influent Comp

Use Pocket OPS for Samples: Scan the container. Sample time & receiver is recorded. For change of custody, enter relinquisher and receiver. Time will be recorded. Chain of custody is thereby recorded. Shows all tests to be run on sample. Results and notes (including field conditions) are entered

POPS - Samples

Show samples due on:
Tuesday, September 02, 2008

Scan barcode or choose sample from list
080902-0001 // Biodiesels

Assigned to: LC_User
Status: PENDING

Employee list

Sampled: 9 /26/08 2 :10 PM
Sampled by: Tom Jefferson

Notes: good sample

Audit: (SUPER) 9/2/08 11:14:01 AM

File Sample CoC Help

Scanned in

Employee list

Use Pocket OPS for a route: Scan location, instrument or display. Time will be recorded automatically. Enter numeric or text result, and notes. Observe prior data and can calculate differences from prior periods and will calculate for meters or scales.

Plan a route...walk the route... download the data. The screen will alert if limits are exceeded, show yesterday's value and do calculations.

WM_mitaka

POPS - Edit Dat

OPSWWTUTOR

Friday 7 / 6 /07

Var: 4521 - Effluent Arsenic

Value:

Units: mg/L Max: 5 Min: 2

Notes:

Prev: -0.4
Modified: SUPER 6/29/07
RollOver: N/A

Enter a numeric value

File Records Help

Enter reading

Enter comments

Last value

Next variable in route

Last value



080926-0006

Main St. Pump Station