

Hach BOD Manager™

Overview

The Hach BOD Manager software automates data entry and calculations from the HQ40d Meter and LBOD probe, providing improved productivity and data integrity for Biochemical Oxygen Demand testing.

Hach BOD Manager can be used as a stand-alone solution or comes integrated with the Hach Water Information Management Solution™ (Hach WIMS™) software products.

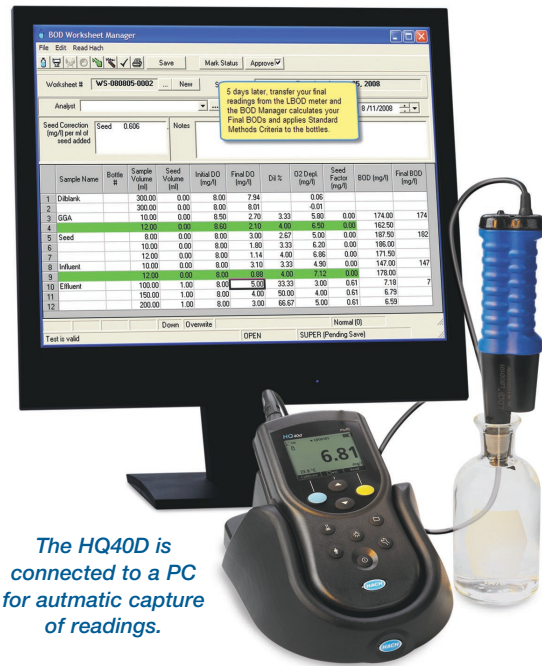
Features and Benefits

Improved Productivity

The Hach BOD Manager software automates your BOD testing and trending, saving valuable time from your day-to-day testing. Once the dissolved oxygen (DO) of a bottle or dilution is measured with the HQ40d Meter and LBOD probe, the data is electronically transferred to the Hach BOD Manager and the results are calculated and averaged. The Hach BOD Manager compares each test to Standard Methods criteria for acceptability to identify invalid tests. These tests are flagged and removed from the average. Additional calculations are included such as Seed Correction and Coefficient of Variation.

Data Integrity

By automating many of the routine steps and calculations, the Hach BOD Manager gives you confidence that your data is being accurately captured and recorded. Electronic data capture, built-in calculations and error-checking minimize common mistakes when transcribing and analyzing data.



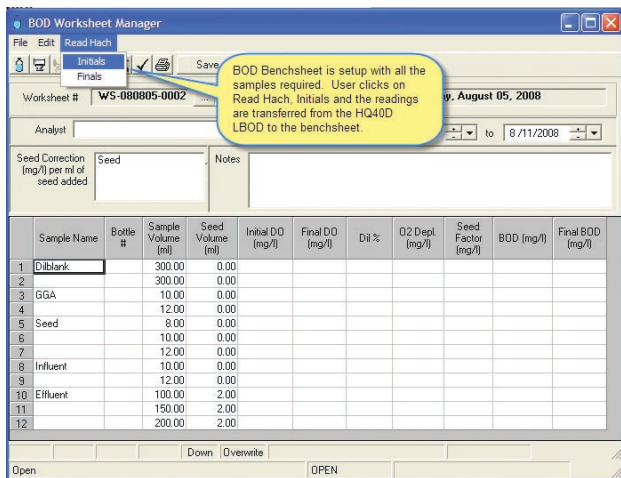
The HQ40d is connected to a PC for automatic capture of readings.

An expanded set of data points, such as initial and final temperature, initial pH and initial DO, further support compliance with Standard Methods and are included in the audit trail. Hach BOD Manager easily calculates Coefficient of Variation and does a comparison to established limits for greater data integrity. The software also automatically handles data qualifiers such as greater than and less than as prescribed by Standard Method to provide consistent, reportable data.

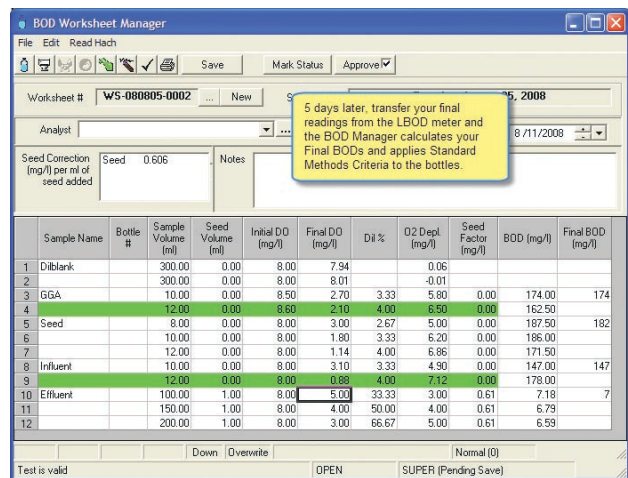
Easy Access to Data

All of the data is stored in a database with simple file structures and drop down menus. Your data is easy to track with unique worksheet numbering for each analytical run. Summary charts and reports can be produced directly from the Hach BOD Manager or the data can easily be transferred with a CSV export to other data systems without manually re-entering the data.

WW
IW
E
FB



Automatically capture the first set of data from the HQ40d instrument.



Automatically capture the second set of data and the Hach BOD Manager makes the appropriate calculations, comparisons and reports.

DW = drinking water WW = wastewater municipal PW = pure water / power
IW = industrial water E = environmental C = collections FB = food and beverage



Specifications

Hach BOD Manager (stand-alone version) includes:

- Single computer license with a 2 gigabyte database, tracking up to 300 samples
- HQ40d interface
- One year of support and software updates
- One hour of live web-based training
- Training video provided with instruction for Hach BOD Manager setup, creating BOD worksheets and entering readings, calculations and reports.

Instrumentation Supported by the Hach BOD Manager

8505700	BOD Measurement System Includes the HQ40d meter with A/C Power and USB adapters; LBOD probe; HQd meter stand; disposable BOD bottles (117 per case); acrylic stoppers (25); BOD bottle caps (2 packages of 6)
HQDBOD01	HQ40d Meter and LBOD Probe
HQDBODMGR kit	HQ40d Meter, LBOD Probe, and Hach BOD Manager software
WM-BOD_MGR	Hach BOD Manager software reads data from the Hach HQ40d Meter and LBOD probe

System Requirements and Ordering Information

For specific information and hardware & software requirements on both the Hach BOD Manager stand-alone solution and the Hach WIMS integrated solution, contact us at: 1-800-677-0067 or visit: www.hach.com/im.

Also look for...

Hach Water Information Management Solution™ (Hach WIMS™)

Accurate Information... Informed Decisions

Provides comprehensive and accurate information from all data sources, to allow more informed decisions. The software is available as a local, web-based, or enterprise solution with flexible payment options. (See Lit. # 2644)

Hach JOB Cal®

Easy to Set Up... Easy to Learn... Easy to Use

Easy, cost-effective maintenance scheduling solution. The software automatically builds an interactive color-coded calendar for easy management of your job activities. Hach JOB Cal also provides the ability to track purchasing, inventory, vendors and labor as well as display equipment drawings and pictures. (See Lit. # 2645)

Hach LAB Cal™

Affordable, Effective Lab Data Management

Designed specifically for the drinking water and wastewater industries, Hach LAB Cal provides simple and affordable sample scheduling and tracking solution for effective lab data management. The software builds a calendar that shows at-a-glance the status of all samples, tests to be run, chain of custody and more. (See Lit. # 2647)

Lit. No. 2646 Rev 1

A10 Printed in U.S.A.

©Hach Company, 2010. All rights reserved.

In the interest of improving and updating its equipment, Hach Company reserves the right to alter specifications to equipment at any time.

At Hach, it's about learning from our customers and providing the right answers. It's more than ensuring the quality of water—it's about ensuring the quality of life. When it comes to the things that touch our lives...

Keep it pure.

Make it simple.

Be right.

For current price information, technical support, and ordering assistance, contact the Hach office or distributor serving your area.

In the United States, contact:

HACH COMPANY

P.O. Box 389

Loveland, Colorado 80539-0389

U.S.A.

Telephone: 1-800-677-0067

E-mail: iimsales@hach.com

www.hach.com/im



Be Right™