

OPS SQL / *Now known as HACH WIMS*

UPGRADE FEATURES AND BENEFITS

HACH WIMS provides all the functionality of **OPS 32™** while running in a client/server environment. This superior architecture, with native utilization of Microsoft SQL Server including stored procedures, triggers, and tuned indexes, provides any size facility with power, performance and a stable operation. **HACH WIMS** is scalable to meet your immediate needs and future growth. With our MSDE Editions, small to medium size plants can harness the same power and performance of an enterprise system without the expense of the enterprise database AND you get all of the features.

Audit Trail

A complete record is kept as to who and when data is entered, changed or deleted.

One-Minute Data

Because of the superior capabilities of the powerful industry standard SQL databases, we can now store data down to the minute. Variable types are one minute, five minute, fifteen minute, one hour, four hours and daily.

Electronic reporting/eDMR

HACH WIMS generates state electronic reporting formats at NO Additional Cost.

Data Approval

We can now track the approval status of data from LIMS software. When reports are run you can now see what data is missing because it has not been approved. OPS SQL will remember what data is missing so you can be sure to report it when the data becomes available.

Daily Detail Calculations

You can now perform calculations on hourly, 15 minute and 1 minute data.

Tree View by Area

"Tree view" shows the organization of variables. This is especially valuable for multi-plant operations in a single database.

Email Gateway

Emails are sent through the HACH WIMS server.

Time Stamped Data & Events

An event can now be displayed with a time stamp. Example: Daily max flow at 16:22:34

Automatic Internet Updates

Maintenance patches are downloaded in the background and you are notified to apply the update.

Interfaces run as Services

SCADA/Historian/LIMS interfaces run as NT services, providing a more stable data transfer.

Data Integrity

- MS SQL/Oracle
- Audit trail
- Data approval
- More security options

Operations control

- Compliance engine
- Events table
- Time stamp
- Detail Calcs
- Down to 1 minute data
- Dashboard gauges

Efficiency

- Electronic reporting-eDMR
- Email
- Tree view by area
- Auto updates
- Multi sheet reports
- Video help/training

New modules

- LAB Cal
- GnR Server
- OPS Remote
- Pocket OPS
- Web portal

Now a part of the Hach portfolio of products.
Call: 1-800-OPS-0067



The Power of Information

Bring all your SCADA, Laboratory and operator log data together and transform it into information.



OPS
SYSTEMS

Events Table

Events can be recorded providing tools for inspection logs, Industrial Pretreatment, and more.

Compliance Engine

The Compliance Engine scans your database for regulatory violations and QC Flags. Creates a record in the event table making reporting, triggers, etc much easier to deal with.

Day	4001 - Effluent Flow	4001 - Effluent BOD	4081 - Effluent pH	4091 - Eff. Temp
1 Sun	2,6150	34.0	6.8	20
2 Mon	2,5310	42.0	6.8	13
3 Tue	2,8950	41.0	6.6	9
4 Wed	2,7120	37.0	9.5	15
5 Thu	2,6460	33.0	7.0	14
6 Fri	3,0000	25.0	7.0	28
7 Sat	4,1600	42.0	41	7.1

Violation is added to the Events Table.

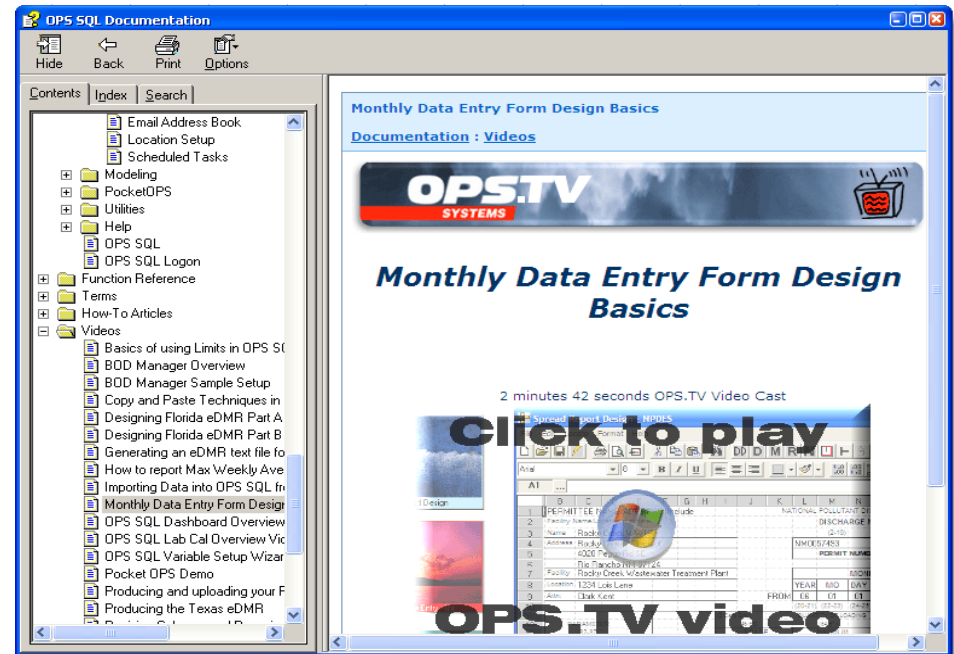
Location	Variable	Event	Start Date	End Date	User	Notes
1 Effluent	4012 - Effluent BOD Load	Violation - Permit Violation	06/01/2008	06/01/2008	DMAX	Effluent BOD Load violated the DMAX
2 Effluent	4011 - Effluent BOD	Violation - Permit Violation	06/01/2008	06/07/2008	WMAX	Effluent BOD violated the WMAX
3 Effluent	4011 - Effluent BOD	Violation - Permit Violation	06/01/2008	06/30/2008	MMAX	Effluent BOD violated the MMAX
4 Effluent	4012 - Effluent BOD Load	Violation - Permit Violation	06/01/2008	06/30/2008	MMAX	Effluent BOD Load violated the MMAX
5 Effluent	4011 - Effluent BOD	Violation - Permit Violation	06/01/2008	06/01/2008	CMAX	Effluent BOD violated the CMAX Limit 14925
6 Effluent	4011 - Effluent BOD	Violation - Permit Violation	06/01/2008	06/30/2008		Effluent BOD Monthly Average exceeds MMAX
7 Effluent	4011 - Effluent BOD	Violation - Permit Violation	06/02/2008	06/02/2008	DMAX	Effluent BOD violated the DMAX Limit 42x25
8 Effluent	4012 - Effluent BOD Load	Violation - Permit Violation	06/02/2008	06/02/2008	DMAX	Effluent BOD Load violated the DMAX

Now that you have captured all deviations from regulatory limits and process (QC) limits you can:

- Easily Track compliance
- Create Management by Exception Trigger Reports which can be automatically emailed to certain lists based on specified criteria
- Know that your process is in control. Use QC limits to flag process control anomalies.

New Help System with Videos

The help system has been completely rewritten. Additional content has been added to the help system including Report Templates, How to videos, etc...



Dashboard Gauges

Gauges can be added to reports to visually display values and status:

